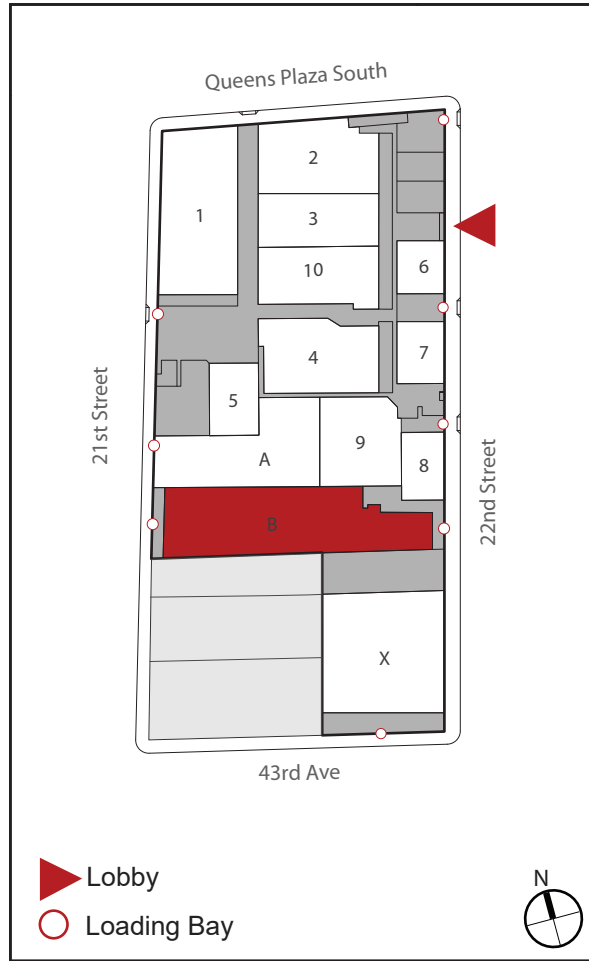


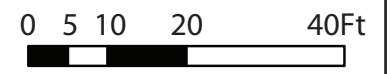
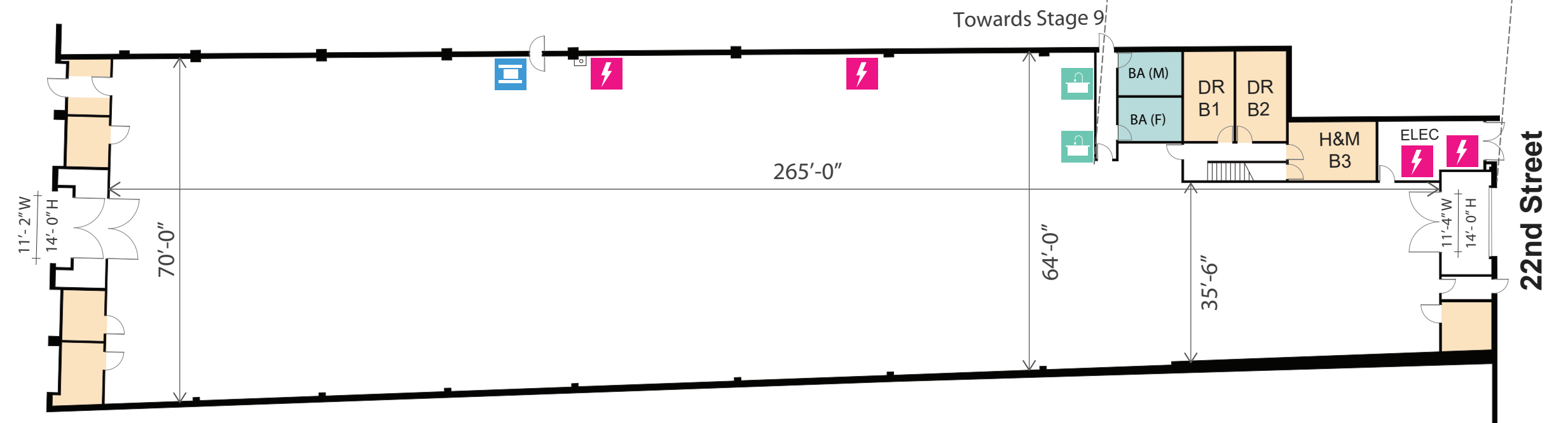
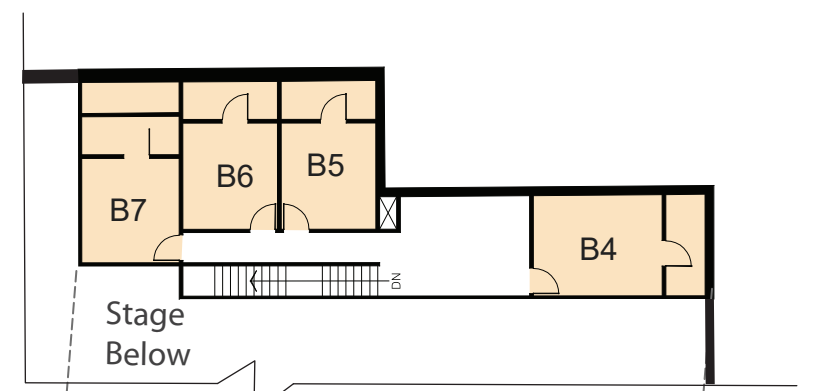
STAGE B

Key Plan



- Power ⚡
- Cable Chase 📺
- Slop sink 🚰
- Ancillary Spaces 🟡
- Bathrooms 🟢

Second Floor



SILVERCUP STUDIOS	Length	Width	Ht to Grid	Ht to Truss	Approx Stage SF	Power	AC	Floor Type	Cyc
	265'-0"	70' to 35'-6"	18'-3"	15'-7"	15,415 sqft	4800 Amps	120 Tons	Wood over Concrete	None