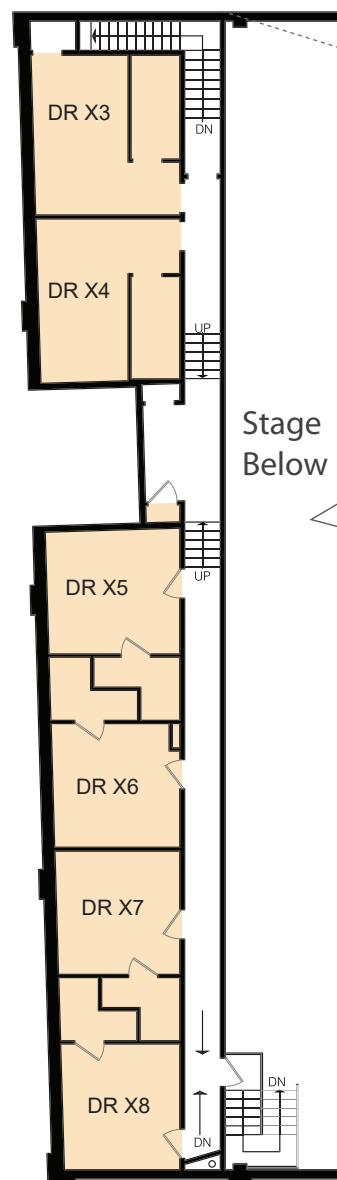


STAGE X

Key Plan



Second Floor



First Floor



SILVERCUP STUDIOS	Length	Width	Ht to Grid	Ht to Truss	Approx Stage SF	Power	AC	Floor Type	Cyc
	115'-6"	115'-6"	19'-10"	13'-2"	13,470 sqft	3600 Amps	120 Tons	Wood over Concrete	None