

SILVERCUP STUDIOS



Silvercup Studios is New York's leading destination for the industry's top content producers with three world-class studio lots, 240,000 square feet of stages, a robust inventory of lighting & grip equipment and turnkey production offices, plus all the support for seamless film, television and short-term productions.

3 Lots

Conveniently located

557,942 SF

Total production space

23 Sound Stages

Totaling 240,000 SF

290,700 SF

Office & support space

Two lots in Long Island City and one in the Bronx, Silvercup offers quick and easy access to Midtown Manhattan and the surrounding tri-state area. When you film here, you're at the epicenter of the entertainment industry—with direct inroads to one of the largest and most diverse pools of talent, vendors and crew.

SILVERCUP
STUDIOS®



Silvercup Studios

3 New York City Locations

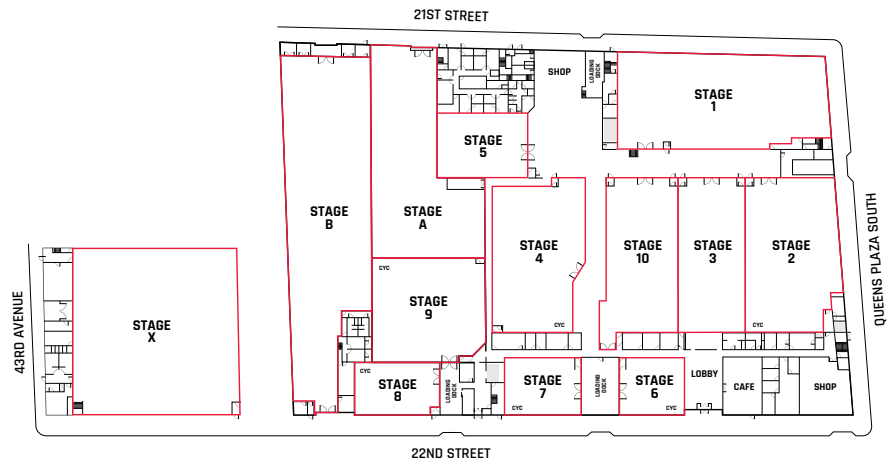


Our 23 state-of-the-art sound stages are some of the largest and best equipped in New York City. They include twelve cycloramas, and rooftop shooting space with spectacular Manhattan skyline views. Stage sizes range from 2,100 to 16,220 square feet with ceilings up to 50 feet. All offer drive-up access, convenient loading and unloading zones and heavy power.

Silvercup Main Lot

42 - 22 22nd Street,
Long Island City, NY 11101

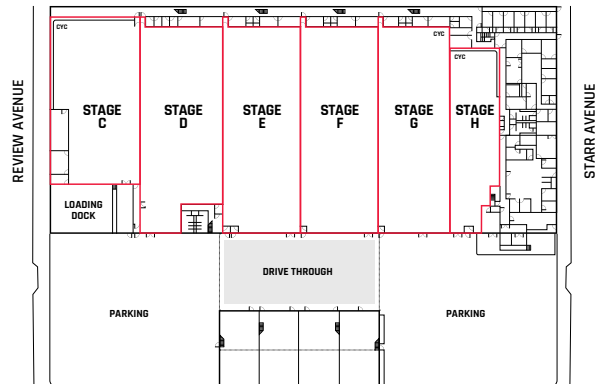
- 13 sound stages, from 2,100 to 15,420 SF
- 9 stages with cycs
- 18-33' ceiling heights
- 55,801 SF of support space
- 57,600 SF of office space
- Parking for over 150 vehicles
- Rooftop shooting space
- Manhattan skyline views



Silvercup East Lot

34-02 Starr Avenue
Long Island City, NY 11101

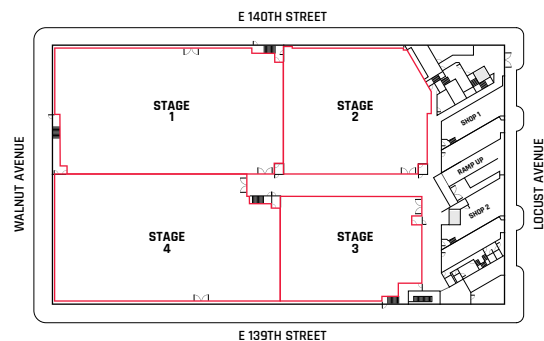
- 6 sound stages, from 8,580 to 15,870 SF
- 3 stages with cycs
- 28' ceiling heights
- 37,650 SF of support space
- 41,880 SF of office space
- Parking for over 100 vehicles
- Enclosed gated lot



Silvercup North Lot

295 Locust Avenue
The Bronx, NY 10454

- 4 sound stages, from 8,030 to 16,220 SF
- 50' ceiling heights
- 63,940 SF of support space
- 33,900 SF of office space
- Parking for over 60 vehicles





Location, Location, Location

Our three unbeatable New York City locations are situated in the heart of the entertainment industry, with close proximity to world-class talent, vendors and crew. Each Silvercup lot is just minutes away from major highways, tunnels, bridges and airports—and easy to get to by car, subway or bus.

New York Film Incentives

New York's recently enhanced incentive program includes higher tax breaks, increased annual caps—and for the first time ever, qualifying above-the-line wage costs are eligible.

[LEARN MORE](#)



SILVERCUP MAIN LOT

- 2 min** Queensborough Bridge
- 6 min** Long Island Expressway
- 6 min** Midtown Tunnel
- 15 min** LaGuardia Airport
- 30 min** JFK Airport

Subway Lines: **7, N, W, F, M, E, G**



SILVERCUP EAST LOT

- 6 min** Midtown Tunnel
- 6 min** Long Island Expressway
- 7 min** Brooklyn/BQE
- 10 min** Manhattan
- 18 min** LaGuardia Airport
- 30 min** JFK Airport

Subway Lines: **7,G**



SILVERCUP NORTH LOT

- 10 min** Queens
- 17 min** LaGuardia Airport
- 20 min** Manhattan
- 24 min** Midtown Tunnel
- 40 min** Westchester
- 50 min** JFK Airport

Subway Line: **6**

Stage Specs–All Locations



Stage	Lot	Length	Width	Height to Grid	Height to Beams	Approx. SF	Power (Amps) 3-phase	A/C	Cyc	Cyc Size (LxWxH)
1	Main	151-157'	68'-71'	18'	16'	12,300	2,400	Yes	None	
2	Main	117'	63'-70'	18'	16'	8,000	2,400	Yes	2-wall	84' x 57'6" x 18'
3	Main	117'	49'	18'	16'	5,700	2,400	Yes	2-wall	84' x 44' x 18'
4	Main	113'-118'	65'-70'	18'	15'2"	8,000	2,400	Yes	2-wall	52' x 33' x 19'
5	Main	54'-64'	42'	36'	36'	3,200	2,400	Yes	1-wall	38' x 16'
6	Main	53'	40'	18'	19'	2,100	1,800	Yes	2-wall	47' x 40' x 19'
7	Main	57'	40'	18'	19'	2,500	1,800	Yes	2-wall	47' x 40' x 19'
8	Main	62'	36'	20'	23'	2,600	1,200	Yes	2-wall	37' x 36' x 20'
9	Main	84'	75'	17'9"	16'	6,640	2,400	Yes	2-wall	78' x 72' x 19'
10	Main	118'	53'	18'	16'	6,500	1,200	Yes	2-wall	44' x 38' x 18'
A ¹	Main	156'	88'	20'	16' 1"	10,220	2,400	Yes	None	
B	Main	290'	64'	20'	15' 8"	15,415	2,400	Yes	None	
X	Main	140'	120'	22'	13' 1 "	13,470	3,600	Yes	None	
Roof ²	Main	290'	62'	---	---	13,470	1,200	---	None	
Terrace ²	Main	39'	36'	---	---	1,400	1,200	---	None	
C	East	173'	90'	28'	28'	13,770	3,600	Yes	2-wall	85' x 85' x 28'
D	East	210'	80'	28'	28'	15,770	3,600	Yes	None	
E	East	210'	80'	28'	28'	15,800	3,600	Yes	None	
F	East	210'	80'	28'	28'	15,868	3,600	Yes	None	
G	East	210'	72'	28'	28'	14,880	3,600	Yes	2-wall	60' x 80' x 27'
H	East	188'	50'	28'	28'	8,582	3,600	Yes	2-wall	50' x 50' x 27'
N1	North	177'	99'	50'	50'	16,220	3,600	Yes	None	
N2	North	114'	99'	50'	50'	10,171	3,600	Yes	None	
N3	North	110	80'	50'	50'	8,030	3,600	Yes	None	
N4	North	175'	99'	50'	50'	15,875	3,600	Yes	None	

NOTES:

¹Stage A is an "L-shaped" space

²Roof and Terrace have views of the Manhattan skyline

For more information:

Contact Lisa Sanchez
 (718) 906-2152
 lisa@silvercup.nyc

silvercupstudios.com



Silvercup Studios is Operated &
 Serviced by The MBS Group